



J. Environ. Nanotechnol.  
Volume 2, No.2 17-28 pp.  
ISSN (Print) : 2279-0748  
ISSN (Online) : 2319-5541  
doi : 10.13074/jent.2013.06.132009

## Estimation of magnetospheric plasma parameters from whistlers observed at Low Latitudes

M. Altaf<sup>1\*</sup>, Ram Vyas<sup>2</sup>

<sup>1</sup> Department of Physics, National Institute of Technology, Hazratbal Srinagar, Kashmir, India  
<sup>2</sup> Department of Electrical engg., National Institute of Technology, Hazratbal Srinagar, Kashmir, India



Received: 20.04.2013      Revised: 15.05.2013      Accepted: 10.06.2013

### Abstract

Whistler observations during nighttimes made at low latitude Indian ground stations Jammu (geomag.lat., 29° 26' N; L = 1.17), Nainital (geomag.lat., 19° 1' N; L = 1.16) and Varanasi (geomag.lat., 14° 55' N; L = 1.11) are used to deduce electron temperatures and electric field in the vicinity of the magnetospheric equator. The accurate curve fitting and parameter estimation technique are used to compute nose frequency and equatorial electron densities from the dispersion measurements of short whistlers recorded at Jammu, Nainital and Varanasi. In this paper our aim is to estimate the Magnetospheric electron temperatures and electric field from the dispersion analysis of short whistlers observed at low latitudes by using the different methods, the results obtained are in good agreement with the results reported by other workers.

**Keywords:** Whistlers; Magnetospheric; Latitude.

### 1. INTRODUCTION

It is well known that lightning discharges are accompanied by the generation of electromagnetic waves in a wide frequency range (Pathak et al. 1982; Prasad and Singh, 1982). Wave energy can penetrate in-to the magnetosphere and propagate almost along geomagnetic field lines to the opposite hemisphere where it is recorded by a radio receiver is called whistler. The dynamic spectrum of the recorded signal is typically dispersed in the spectrogram. These signals sometimes proceeded by an associated signal with an undispersed dynamic spectrum and are generated during the same lightning discharges but propagate in the Earth-ionosphere waveguide (Prasad, 1981; Booker, 1983). When this signal is recorded and coincides approximately with the moment of

lightning discharge [its time delay does not usually exceed 0.04s (Park, 1972) as the velocity of wave propagation in the Earth-ionosphere waveguide is close to velocity of light (Ginzburg, 1970; Yamashita, 1978)], this signal is called an atmospheric or spheric. The whistler signal intensity is normally greatest at few kHz within the ELF/VLF band; 1-20 kHz (Carpenter, 1962).

Whistlers represent an inexpensive and effective method for obtaining various plasmaspheric parameters like electron density, electron temperature, electric field etc. in the magnetosphere, but the experimental results published upto now refer mainly to higher latitudes (Helliwell, 1965; Park, 1970; Corcuff, 1975; Sazhin et al. 1992) and a systematic description of the main features of the plasmaspheric electron density based on large quantities of whistler data is still lacking at high latitudes, with the exception of work by Park et al. (1975). Recently Tracsai et al.

\*M. Altaf Tel. : +91 9443354503

E-mail: [altafnig@rediffmail.com](mailto:altafnig@rediffmail.com)

(1988) have processed whistlers recorded at Tihany, Hungary ( $L = 1.9$ ) between December 1970 and May 1975 in order to study the distribution of equatorial electron density and total electron content in flux tubes having  $L$ -value, lying in the range  $L = 1.4$ - $3.2$ . At low latitudes, the exploration of whistlers for electron density determination has only been carried out by Lalmani et al. (1992), and Lalmani et al. (2000). In this paper the equatorial electron density, equatorial electron temperature and east-west component of electric field at low latitudes using the whistler data observed at our ground stations Jammu, Nanital and Varanasi have been estimated.

At middle and high latitudes both satellite and ground-based whistler data were exploited fully to reveal new facts about the structure and dynamics of the ionosphere and magnetosphere. These achievements included the discovery of the plasmasphere, plasmopause, and bulge (Carpenter and Park, 1973), identification of the mechanism of ionosphere-protonosphere coupling (Park, 1970; Andrews, 1980) and the measurement of the magnetospheric electric field (Carpenter et al., 1972). Although the application of whistlers to diagnostic of electron temperature of high latitudes has been discussed since the early 1960s (Liemohn and Scarf, 1962; Sazhin et al., 1992, 1993), this problem still seems to be at an early stage of its development at low latitudes. At low latitudes, whistler data have been used for determining electron temperatures, electric field etc. for understanding the magnetospheric phenomena.

We consider the methods of "traditional" diagnostics of magnetospheric parameters, such as electron plasma density, the large scale electric field and possible temporal variations of the magnetic field at the magnetospheric equator, when both  $f_n$  and  $t_n$  are known. When one or both of these parameters are not known the dynamic spectra of whistlers and/or sferics need to be extrapolated. Method of this extrapolation is subsequently considered. Then we estimate the equatorial electron density, electron temperature, and electric field in the equatorial magnetosphere based on the analysis

of the dynamic spectra of whistlers. Whistler studies in India, which have been in progress since 1963, have made significant contribution to the propagation of low latitude whistlers and understanding of the structure and dynamics of the low latitude ionosphere (Somayajulu et al., 1972; Singh, 1993; Singh, 1998; Singh and Hayakawa, 2001; Singh et al., 2004, 2006

For the analysis of non-nose whistlers, a number of methods have been proposed (Smith and Carpenter, 1961; Dowden and Allcock, 1971; Ho and Bernard, 1973; Bernard, 1973; Rycroft and Mathur, 1973; Tarcsai, 1975). The nose frequency of the whistler data used in estimating electron density, electron temperature and electric field have been computed by means of accurate curve fitting method developed by Tarcsai (1975) based on least squares estimation of the two parameters, zero frequency dispersion  $D_o$ , equatorial electron gyrofrequency  $f_{He}$  in Bernard's approximation. This matched filtering technique developed for the analysis of whistler waves increases the accuracy of analysis and speed of data processing (Hamar and Tarcsai, 1982; Hamar et al., 1992; Singh et al., 1999, 2000, 2001, 2004, 2006). The technique employs dispersive digital filters whose frequency-time response of the matched to the frequency-time response of the signal to be analyzed. Due to high resolution and time domain many fine structure components with amplitudes differing in frequency and time are seen in dynamic spectra (Hamar et al. 1992; Singh et al., 1999). The accuracy and effectiveness of the technique have been discussed at length by analyzing a large number of whistlers both on the ground stations (from the low to the high latitudes) and onboard rockets/satellites (Hamar et al., 1990, 1992; Lichenberger et al., 1991; Singh et al., 1999, 2000, 2004, 2006).

Electric fields are closely related to and control most of observed geophysical phenomena such as the bulk motion of the magnetospheric plasma, the current systems in the magnetosphere and the ionosphere, and to the acceleration of plasma particles in the Earth's magnetosphere. The role of the electric field in controlling the bulk motion of

the plasma has been recognized in all the theoretical studies of the various dynamic processes taking place in the Earth's magnetosphere although adequate experimental techniques for the precise measurements of such fields in the ionosphere and magnetosphere were not available for quite some time. The observed cross-L motions of the whistler ducts are being used currently for obtaining the east-west component of the electric fields in the plasmasphere during substorm periods as well as quiet times (Carpenter and Stone, 1967; Park and Carpenter, 1970, Carpenter and Akasofu, 1972; Block and Carpenter, 1974; Park, 1975; 1976; 1978; Mishra et al., 1980).

The tidal forces in the Earth's atmosphere cause motion of the plasma across the magnetic field lines and give rise to electromotive forces. The generation of electric field by the motion of conducting plasma across the magnetic field is analogous to dynamo action and the theory dealing with the electric field generation by this mechanism is known as dynamo theory. The electric field generation mechanism in the ionosphere has been developed by various workers (Hines, 1963; Maeda and Kato, 1966). Electric field measurements have been carried out in the equatorial E-region of the ionosphere by many workers (Mutsushita, 1969; Davies et al., 1967; Subaraya et al., 1972) These measurements reveals the existence of east-west electrostatic field ranging from 1 to 2 mV/m. The whistler method of obtaining the east-west component of the electric field has the advantage of extended time coverage and remarkable property of being directly involved in the motion of magnetospheric tubes or 'ducts' of ionization. Further, the ground based whistler determinations of electric fields are comparatively easier and the equipment used can be monitored with relative ease on a routine basis. It is precisely for this reason that the ground based whistler studies of electric fields are still continued at a number of stations spread all over the world.

In this paper we first present the whistler data used for the analysis recorded at Jammu, Nainital and Varanasi. This is followed by a

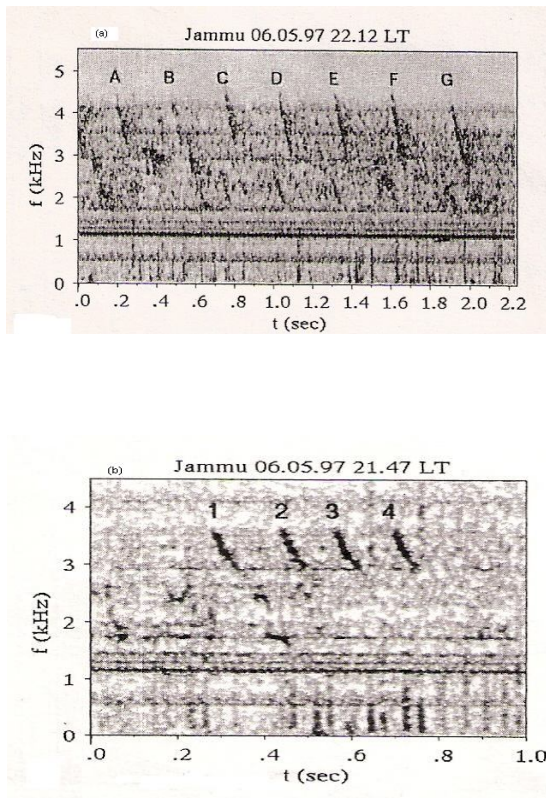
presentation of an outline of the method developed by Tarcsai (1975) from which electron density, electron temperatures, and electric field in the vicinity of magnetospheric equator are evaluated. Finally the results are discussed and compared with those reported by other workers.

## 2. DATA SELECTION AND METHOD OF ANALYSIS

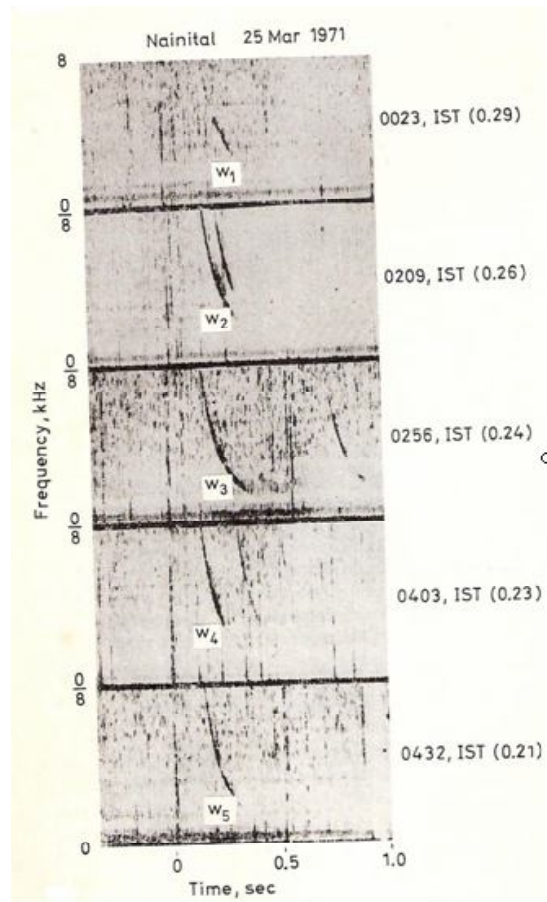
At low latitudes, the whistler occurrence rate is low and sporadic. But once it occurs, its occurrence rate becomes comparable to that of mid-latitudes (Hayakawa et al., 1988). Similar behavior has also been observed at our low latitude Indian stations. All the Indian stations are well equipped for measurements of VLF waves from natural sources. For the present study, the whistler data chosen corresponds to June 5, 1997 for Jammu, 25 March 1971 for Nainital and 19 February 1997 for Varanasi. On 5 June 1997 at Jammu station whistler activity started around 2140 h IST (Indian Standard Time) and lasted upto 2245h IST. During this period about 100 whistlers have been recorded (Lalmani et al., 2001). On 25 March 1971 at Nainital station whistler activity commenced around 0020 IST and lasted upto 0520 IST. Altogether more than hundred whistlers were recorded and the occurrence rate showed a feeble but discernible periodicity (Rao and Lalmani, 1975). On 19 February 1997 at Varanasi station whistler activity started around 2300 IST and lasted for about one hour upto 0030 IST. During this period several whistlers were recorded (Singh et al., 2000).

Fig.1 (a) presents dynamic spectrum of short whistlers (marked A, B, C, D, E, F and G, selected for the analysis) in the frequency band 3-4.5 KHz recorded at Jammu at 2212 IST on June 5, 1997. In the frequency band 1.7-3 KHz large number of frequency components are missing and signals resemble more like emissions rather than whistlers. Further, VLF waves in both the frequency bands do not appear simultaneously, rather they appear alternately. Fig.1 (b) shows dynamic spectrums of short whistlers (marked 1, 2, 3 and 4, selected for the analysis) and VLF emissions recorded at Jammu

at 2147 IST. Whistlers are banded and diffused in the frequency range 2.7-3.7 KHz and are repeated in time. The time interval between the events is not constant. Unusual VLF noises are also seen in the spectrum. Fig.2 shows dynamic spectrum of short whistlers selected for the analysis recorded at Nainital on March 25, 1971. The sonograms of sample whistlers (marked W1, W2, W3, W4 and W5) are arranged in a sequence for different time of arrival. Fig.3(a) and (b) shows the dynamic spectra of short whistlers (selected for analysis) recorded at Varanasi on 19 February 1997 at 0017 IST and 2338 IST respectively.



**Fig. 1(a) :** Dynamic spectrum of whistlers recorded at Jammu June 5, 1997. Whistlers are marked by A,B,C,D,E,F and G. (b) Dynamic spectrum of whistlers recorded at Jammu June 5, 1997. Whistlers are marked by 1,2,3 and 4.



**Fig. 2:** Dynamic spectrum of whistlers recorded at Nainital March 25, 1971. Whistlers are marked by W1,W2,W3,W4 and W5.

Tarcsai (1975) has developed a curve fitting technique for the analysis of middle and high latitude whistlers. This technique has also been applied successfully to those low latitude whistlers whose propagation path are low below  $L = 1.4$  (Singh, 1997; Sonwalker and Inan, 1995; Ohta et al., 1997; Hayakawa et al. 1988; Dowden and Allcock, 1971; Ho and Bernard, 1973; Rycroft and Mathur, 1973; Tarcsai, 1975). Further technique is found suitable not only for long and good quality whistlers but also for short and faint whistlers. The computer programme written for the purpose requires input data such as frequency time ( $f, t$ ) values scaled at several points along whistler trace appropriate for F2, zero frequency dispersion (Do),

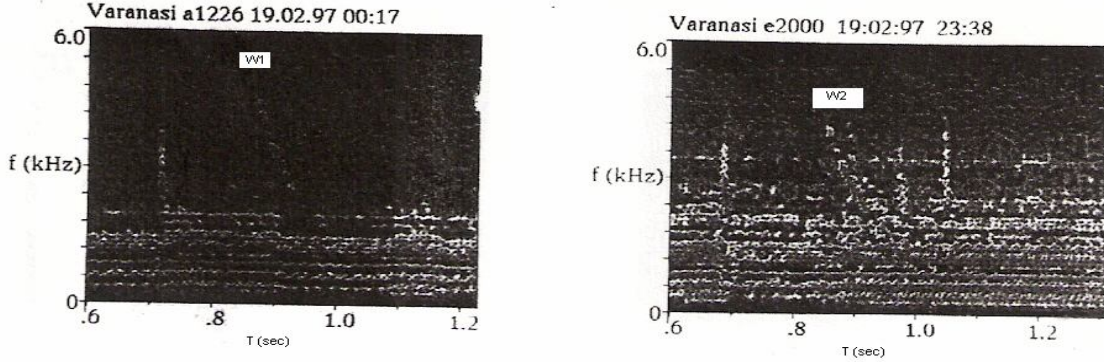


Fig. 3. Dynamic spectra of whistlers recorded at Varanasi February 19, 1997. Whistlers are marked by W1 and W2

and a suitable ionospheric model etc. The output results include the L-value of propagation, equatorial electron density, total tube content etc. we have adopted this programme for the analysis of nighttime whistlers recorded at our station Nanital, Varanasi and Jammu during quiet days.

At low L-values, the curve fitting method of Tarcsai (1975) would not change too much the equatorial electron density and total electron content values compared to the systematic errors which are inherent in all of the existing nose extension methods. These systematic errors originate from the approximations used for the refractive index and for the ray path in the derivation of the analytic expressions for the dispersion and from the difference between the theoretical and actual distribution plasma along the field lines (Tarcsai, 1981; Tarcsai et al., 1989). To examine its validity we analyzed few whistlers recorded at Jammu using this method as Dowden Allcock (1971) Q-technique. Both methods yielded results within  $\pm 10\%$ . Further, it is to be noted that the Tarcsai's method has successfully been used in the analysis of low latitude whistlers (Singh et al., 1992).

For the determination of  $D_o$ ,  $f_n$  and  $t_n$  Ho and Bernard's (1973) approximate function for the dispersion of whistlers is given by (Tarcsai 1975)

$$D(f) = t(f)f^{1/2} = D_o \left[ \frac{(f_{Heq} - Af)}{f_{Heq} - f} \right] \quad (1)$$

Where

- $D_o$  = zero frequency dispersion
- $f_{Heq}$  = equatorial electron gyrofrequency
- $f$  = Wave frequency
- $t(f)$  = travel time at frequency  $f$ , and

$$A = \frac{3\Lambda_n - 1}{\Lambda_n(1 + \Lambda_n)} \quad (2)$$

Here

$$\Lambda_n = \frac{f_n}{f_{Heq}}$$

Where  $f_n$  is the nose frequency for which travel time  $t_n$  is written as

$$t_n = \left[ \frac{D_o}{f_n^{1/2}} \right] \left[ \frac{2}{(1 + \Lambda_n)} \right] \quad (3)$$

If the causative spheric is unknown, and the travel times at different frequencies of the whistler traces are measured with respect to an arbitrary time origin, then it is necessary to introduce a new parameter T, which gives the difference in time between the chosen origin and the actual causative spheric. Using T and equation (1) the measured travel time  $t^*(f)$  can be written as

$$t^*(f) = t(f) - T = \frac{D_o}{\sqrt{f}} \frac{(f_{Heq} - Af)}{(f_{Heq} - f)} - T$$

$$= \left[ \frac{D_o}{\sqrt{f}} \frac{f_{Heq} f_n (f_{Heq} + f_n) - f(3f_n - f_{Heq})}{f_n (f_{Heq} - f)(f_{Heq} + f_n)} \right] - T \quad (4)$$

In this equation there are four unknown parameters  $D_o$ ,  $f_{He}$ ,  $T$  and  $f_n$ . Tarcsai (1975) has developed a computer program to solve equation (4) for the unknown using successive iteration method. In this method those values of  $D_o$ ,  $f_{He}$ ,  $T$  and  $f_n$  are searched which give best fit to the measured parameters. After Park (1972) and using equation (3) for  $t_n$

$$n_{eq} = K_e f_n t_n^2 L^{-5} = K_e' D_o^2 f_{Heq}^{5/3}$$

$$N_T = K_T f_n t_n^2 L^{-1} = K_T' D_o^2 f_{Heq}^{1/3}$$

$$N = K_1 f_n t_n^2 L^{-5} = K_1' D_o^2 f_{Heq}^{5/3} \quad (5)$$

Where the constants  $K_e'$  and  $K_T'$  are weakly dependent on  $f_n$  and  $\ddot{E}_n$  Tracsai (1975).

Using equation (5) and analyzing whistlers shown in Figure 1-3 recorded at Jammu, Nainital and Varanasi, nose frequency  $f_n$ , equatorial electron density  $n_{eq}$  and total electron content  $N_T$  in a flux tube of unit cross section has been evaluated. Then the equatorial electron temperature  $T_{eq}$  was estimated from nose frequency computed from Tarcsai (1975) method for a given model of electron distribution for our analysis. A diffusive equilibrium model similar to that adopted by Park (1972), Tarcsai (1975), Chauhan and Singh (1992) and Singh (1999, 2000, 2004 and 2006), was employed which was represented at the height 1000km by an electron density  $10^3$  electron/cm<sup>3</sup>,  $O^+ = 90\%$ ,  $H^+ = 8\%$ , and  $He^+ = 2\%$  at the temperature ( $T_{ref}$ ) of 1000 °K. The electron temperature in the magnetosphere ( $T_e$ ) is related to the electron temperature at the reference level ( $T_{ref}$ ) by the equation.

$$T_e / T_{ref} = (R / R_{ref})^n \quad (6)$$

Where  $R$  and  $R_{ref}$  are the corresponding geocentric distances. We took two values of  $n$ , ( $n = 1$  and  $2$ ). For the case of  $n = 0$ ,  $T_e$  remains almost constant and for the case of  $n = 2$ ,  $T_e$  increases rapidly with height, one expect the actual value of  $n$  to lie between these two extremes. The results of the calculation of  $f_n, f_{He}, D_o, L, n_{eq}$  and  $T_{eq}$  for the whistlers under consideration are shown in Table 1 (for  $n = 1$  and  $2$ ).

The whistler nose frequency  $f_n$  is related to its path  $L$  by the approximate relation (Park, 1978)

$$f_n = 3.23 \times 10^5 L^{-3} \quad (7)$$

Where  $f_n$  is in kHz and a central dipole magnetic field is used to represent the geomagnetic field. The nose frequency and the minimum equatorial gyrofrequency along the path of propagation are related as (Smith, 1960; 1961; Angerami, 1966; Block and Carpenter, 1974)

$$f_n = K' f_{Heq} = K' f_{Ho} (R_o / R)^3 \quad (8)$$

Where  $K' = 0.38$  for a diffusive equilibrium model of the field-line distribution of ionization,  $f_{Heq}$  and  $f_{Ho}$  are the equatorial gyrofrequencies at geocentric distances of  $R$  and  $R_o$  (Earth's surface) respectively.

In the equatorial plane the convection electric field, defines as positive in the eastward direction, is given by

$$E = -V \times B / B^2 \quad (9)$$

In the case of magnetic equator we obtain from equation (8)

$$dR/dt = -(E_w / B_o) (R_o / R) \quad (10)$$

Where  $B_o$  represents the geomagnetic field strength at the Earth's surface and  $E_w$  is the westward component of the magnetospheric electric field. With the help of equations (7) and (8) the convection electric field in a dipole model in the

**TABLE 1. Parameters of whistlers observed at Jammu, Naitinal and Varanasi ground stations estimated from the whistler dispersion analysis using accurate curve fitting technique. W is the whistler number, IST is the Indian Standard Time,  $D_o$  is the dispersion of whistler,  $f_n$  is the whistler nose frequency,  $f_{Heq}$  is equatorial gyro frequency, L-value is in earths radii,  $n_{eq}$  is the equatorial electron density and  $T_{eq}$  is equatorial electron temperature.**

W	station	Dates & Year	IST	$D_o$ ( $sec^{1/2}$ )	$f_n$ (KHz)	$f_{Heq}$ (KHz)	L Value	$n_{eq}$ ( $cm^{-3}$ )	$n=1$ $T_{eq}$ (ev)	$n=2$ $T_{eq}$ (ev)
1	Jammu	05 June 1997	21:40:25	65.5±1.0	4.2±0.03	11.37±0.07	4.25±0.01	159±3	0.28	0.85
2	Jammu	05 June 1997	21:47:42	81.9±1.1	3.39±0.01 3	10.59±0.034	4.35±0.00 5	220±5	0.29	0.86
3	Jammu	05 June 1997	22:47:50	88.9±1.8	3.82±0.02	10.27±0.05	4.39±0.07	247±8	0.29	0.87
4	Jammu	05 June 1997	22:47:55	87.6±1.4	3.85±0.01	10.37±0.03	4.38±0.00	244±6	0.29	0.87
5	Jammu	05 June 1997	22:12:20	28.8±1.2	8.15±0.72	21.98±1.95	3.41±0.10	93±6	0.20	0.4
6	Jammu	05 June 1997	22:12:51	28.9±0.9	6.29±8.21	16.96±0.55	3.72±0.04	61±1	0.14	0.5
7	Jammu	05 June 1997	22:13:22	35.5±1.7	6.13±0.25	16.51±0.66	3.75±0.05	88±2	0.24	0.6
8	Jammu	05 June 1997	22:13:53	38.3±1.9	4.61±0.10	12.42±0.28	4.12±0.03	63±4	0.27	0.7
9	Jammu	05 June 1997	22:14:24	26.1±0.6	5.76±0.13	15.53±0.35	3.83±0.02	43±4	0.25	0.6
10	Jammu	05 June 1997	22:14:55	22.8±1.7	5.99±0.41	16.17±1.10	3.78±0.08	35±1	0.24	0.5
11	Jammu	05 June 1997	22:15:26	38.9±1.2	5.06±0.09	13.62±0.24	4.00±0.02	76±3	0.26	0.6
12	Nainital	25 March 1971	00:23:00	20.2±2.1	68.33±0.0	204.35±0.84	1.62±0.00	298±0	0.05	0.2
13	Nainital	25 March 1971	02:09:00	18.6±0.6	16.85±3.0	45.9±0.82	2.67±0.00	136±3	0.14	0.2
14	Nainital	25 March 1971	02:56:00	18.5±0.9	9.72±1.1	26.2±0.381	3.21±0.00	52±6	0.19	0.3
15	Nainital	25 March 1971	04:03:00	13.2±0.7	13.24±2.6	35.8±0.72	2.89±0.00	45±1	0.1	0.2
16	Nainital	25 March 1971	04:32:00	15.4±0.5	8.53±3.9	23.0±0.10	3.36±0.00	29±1	0.2	0.4
17	Varanasi	19 Feb. 1997	00:17:00	11.9±0.3	36.8±2	103.5±60	2.1±0.4	247±24.6	0.1	0.2
18	Varanasi	19 Feb. 1997	23:38:00	13.5±0.2	13.1±1.1	35.3±31	2.9±0.01	45±5	0.1	0.2

equatorial plane can be obtained as (Block and Carpenter, 1974; Park, 1976; 1978)

$$E_w = -2.1 \times 10^{-2} (df_n^{2/3} / dt) \text{ V/m} \quad (11)$$

With the nose frequency expressed in hertz one can directly estimate the convection electric field from the slope of ( $f_n^{2/3}$ ) using equation (10). The variation of  $f_n^{2/3}$  with time for the whistlers observed at Jammu, Nanital and Varanasi are given in Figures 4-6 respectively.

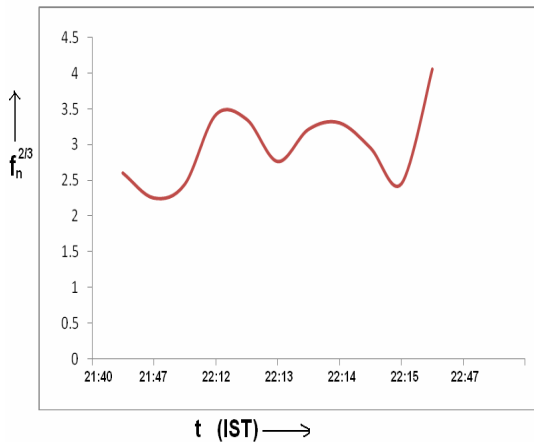


Fig.4. Plot between  $f_n^{2/3}$  and  $t$  for the case observed at Jammu on 05 June 1997

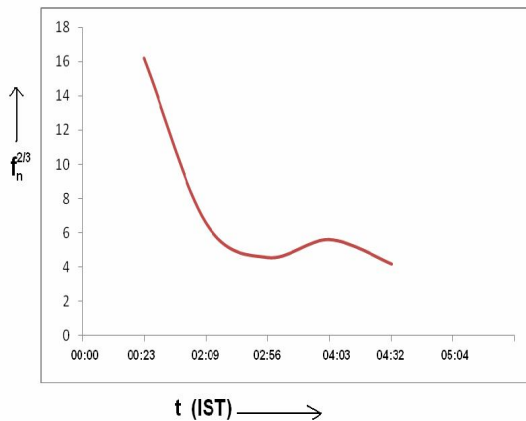


Fig.5. Plot between  $f_n^{2/3}$  and  $t$  for the case observed at Nanital on 25 March 1971

### 3. RESULTS AND DISCUSSION

Several attempts have been made to use whistlers as a diagnostic of the electron temperature of the magnetosphere besides the traditional methods of diagnostics of electron temperature in the magnetosphere. The first such attempt was probably made by Scarf, (1962) who estimated this temperature from the thermal attenuation of nose whistlers at the upper cut-off frequency. This method was developed by Liemhon and Scarf, (1962, b; 1964), but, to our knowledge, was never used in practice, perhaps for two reasons. Firstly, it is difficult to decide whether the whistler upper cut-off frequency is determined by wave attenuation or by propagation effects. Secondly, the interpretation of the whistler cut-off frequency in Scarf's method is very sensitive to the anisotropy of the electron distribution function, which can in general, be determined only by in-situ measurements.

In an alternative approach to this problem, Mc Chesney and Hughes (1983) measured the electron density at the magnetospheric equator ( $n_{eq}$ ) by whistler dispersion analysis, and in the topside ionosphere from in situ observations of LHR noise. The ratio of these densities was fitted to a diffusive equilibrium model of electron density distribution with temperature as a parameter.

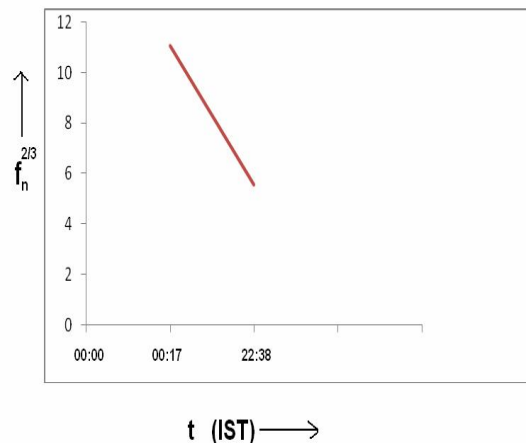


Fig.6. Plot between  $f_n^{2/3}$  and  $t$  for the case observed at Varanasi on 19 Feb. 1997



The main assumption was that the electron temperature did not change along the magnetospheric magnetic field line. However, this assumption seems to be incompatible with satellite measurements of electron temperature, equatorial temperatures can be up to a factor of 10 larger than those at ionospheric altitudes (Serbu and Maier, 1966; Seely, 1977) and needs to be abandoned in further modifications of this method.

A different approach was taken by Guthart (1965) who attempted to estimate magnetospheric electron temperature from its effect on whistler group velocity, assuming a gyrofrequency model electron distribution. He predicted that the thermal effect on whistler spectra should be largest at frequencies near the upper cut-off frequency of nose whistlers. However, the size of the effect was less than the experimental error associated with whistler spectral analysis. This conclusion enabled Guthart to estimate an upper bound on the magnetospheric electron temperature of  $2 \times 10^4 \text{ K} \approx 1.7 \text{ eV}$ . By contrast, Kobelev and Sazhin (1983) have argued that thermal effects in the vicinity of the plasmopause can be estimated by comparison of observed and theoretical whistler dispersion curves. Assuming an electron density distribution along field lines, they obtained values of electron temperature in the range 7-19 eV, depending on the value of the parameter  $n$ . This temperature corresponds to an average temperature of all electrons “cold” ones with energies  $< 1 \text{ eV}$  plus small “hot” components with energies of the order 1 keV. In both these papers the effect of variation of the electron temperature along the magnetospheric magnetic field line was neglected as was done by Mc Chesney and Hughes (1983). More accurate analysis by Sazhin et al. (1990), based on the DE-1, 2, 3, 4 models described earlier, led to a result rather close to that of Guthart (1965), namely, the magnetospheric electron temperature was estimated to be below 4 eV and depends on the choice of electron distribution model.

Sazhin et al. (1992) discussed different approaches to this type of diagnostic technique and

have concluded that the most effective way to estimate the electron temperature with the help of ground – observed whistlers would be to use nose whistlers with the well-defined upper branch and compare whistler group delay times at the nose and at the upper cut-off frequency. Recently, Sazhin et al. (1993) have extended this approach of analysis to a larger number of whistlers in order to get statistically more significant results. They have shown that the estimated magnetospheric electron temperature strongly depends on the choice of model of electron distribution along the magnetospheric magnetic field line.

The whistler data recorded at Jammu, Nainital and Varanasi at different times and for different magnetic activities have been analysed to estimate the magnetospheric electron temperature in the vicinity of magnetospheric equator at low latitudes. We have applied the curve-fitting technique of Tarcsai (1975) for our non-nose whistlers at these stations to derive the magnetospheric electron temperatures. The estimated temperature of magnetospheric electrons inferred from the whistler data shown in Table 2.1 is about 0.8 eV for the value of  $n = 2$  and is about 0.25 eV for the value of  $n = 1$ . Our mean value of  $T_{eq}$  obtained using the diffusive equilibrium model estimated by the method of curve-fitting technique of Tarcsai (1965) is  $\sim 0.5 \text{ eV}$ , slightly smaller with other estimates of electron temperature in the equatorial plasmasphere (see Guthart, 1965, 1973; Sazhin et al., 1993; Sazhin et al., 1990, 1992). Magnetospheric temperatures are quite variable [e.g. Serbu and Maier (1970)] inferred temperatures between  $5 \times 10^3 \text{ K}$  and  $3 \times 10^4 \text{ K}$ ; similar electron temperatures were deduced in a more detailed study by Decreau et al. (1982) and it would be unwise to attempt to generalize our results.

We have also estimated the above electric field on the basis of dipole geomagnetic field. However, both ground-based and satellite borne magnetometer data shows that fast changes in the magnetic field takes place during substorm commencement and substorm expansion and

recovery phase. Wang and Kim (1972) have discussed the decaying ring current and the electric field that may be associated with that decay. Thus, the departure from the dipole field model gives an induced electric field due to temporal changes in the geomagnetic field.

In the present study the magnetospheric electric field in the plasmasphere at different L-values is found to be eastward in the pre-midnight sector and westward in the post-midnight sector, in agreement with the published results (Carpenter et al., 1972; Park, 1978; Andrews et al., 1978; Block and Carpenter, 1974; Mishra et al., 1980). The magnitude of the eastward electric field is about 0.35 mV/m in the equatorial plane of Jammu. The westward electric field comes out to be about 0.72 mV/m for Nainital and 0.12 mV/m for Varanasi.

Thus the present results of electric field agrees with the results of Ionosonde observations of the night-time F-layer during substorm (Park and Meng, 1971) and are in good agreement with the results reported by Park (1978). In the Ionosonde studies, it was found that during winters, the F-layer settles down to a quasi steady state. Its response to the magnetospheric substorm activity consists of a large scale distortion with F-layer lifted upward in the pre-midnight sector and pushed downward in the post-midnight sector. This distortion was interpreted as the result of  $E \times B$  drift by an eastward electric field before midnight and by a westward field after midnight. This reversal in the electric field direction is confirmed by the low latitude whistler results reported here. The reversal of the electric field direction near midnight as shown in Figs. 4-6 with the westward component during post-midnight hours and an eastward component during pre-midnight hours was also observed by the barium cloud technique (Haerendel and Lust, 1970) and by electrostatic probes on balloons (Mozer and Serlin, 1969).

#### 4. CONCLUSION

The non-nose whistlers recorded at Jammu, Nainital and Varanasi have been analyzed

to estimate the equatorial electron density, electron temperature and electric field in the equatorial magnetosphere. The estimated temperature and electric field are slightly smaller compared to the estimated value of other workers. This preliminary test of our method of temperature diagnostic is rather encouraging. However, before this method can be recommended for practical applications we need to be able to specify more accurately the model of electron density, temperature distribution, and electric field in the magnetosphere, have a better estimate for the effect ducted ray paths and increase the precision of determining whistler parameters. Actually it is first attempt to estimate the above mentioned parameters by using non-nose whistler data recorded at Jammu, Nainital and Varanasi.

#### ACKNOWLEDGEMENT

M. Altaf Ram Vyas are thankful to Director, NIT Srinagar, Kashmir, India for his constant encouragement and support

#### REFERENCES

- Andrews, M.K., Night time Radial plasma drifts and coupling fluxes at L=2.3 from whistler mode measurements, *Planet space sci.* 28, 407-417 (1980).
- Bernard, L.P., A new nose extension method for whistlers, *J. Atmos. Terr. Phys.* 35, 871-880 (1973).
- Carpenter, D.L., Stone, K., Siren, J.C., Crystal, T.L., Magnetospheric electric field deduced from drifting whistler path, *J. Geophys. Res.* 77, 2819-2834 (1972).
- Carpenter, D.L., Park, C.G., On what ionospheric workers should know about the plasmapause and plasmasphere, *Review of Geophysics and space phys.*, 11, 133-154 (1973).
- Chauhan, P. and Singh, B., High dispersion whistlers observed at Agra, *Planet space sci.*, 40, 873-877 (1992).

- Decreau, P.M., Beghin, C. and Parrot, M., Global characteristics of the cold plasma in the equatorial plasmopause region as deduced from the GEOS-I mutual impedance prob, *J.Geophys. Res.* 87, 695-712 (1982).
- Dowden, R.L. and Mck. Allcock, G., Determination of nose frequency of non-nose whistlers, *J.Atmos. Terr. Phys.*, 33, 1125-1129 (1971).
- Guthart, H., Nose whistler dispersion as a measure of magnetospheric electron temperature, *Radio Sci.*, 69D, 1417-1424 (1965).
- Hamar, D., Tarcsai, G., Lichtenberger, J., Smith, A.J., Yearby, K.H., Fine structure of whistlers recorded digitally at Hally Anteritia, *J.Atmos. Terr. Phys.*, 52, 801-810 (1990).
- Hamar, D., Ferencz, Cs., Lichtenberger, J., Tarcsai, G., Smith, A.J., Yearby, K.H., Trace splitting of whistlers: a signature of fine structure or mode fitting in magnetospheric ducts, *Radio Sci.* 27, 341 (1992).
- Hamar, D., Tarcsai, G., High resolution frequency-time analysis of whistlers using digital matched filtering-part I: Theory and simulation studies, *Ann.Geophys.*, 38, 119-128 (1982).
- Hayakawa, M., Tanaka, Y., Sazhin, S.S., Tixier, M. and Okada, T., Substorm associated VLF emissions with frequency drift in the pre-midnight sector, *J.Geophys. Res.*, 93, 5685-5700 (1988).
- Ho, D. and Bernard, L.C., A fast method to determine the nose frequency and minimum group delay of whistlers when the causative spheric is unknown, *J.Atmos. Terr. Phys.* 35, 881-887 (1973).
- Kobelev, V.V. and Sazhin, S.S., An estimate of magnetospheric electron temperature from the form of whistlers'ograms, *J.Techn. Phys.* (Letters), 9, 862-865 (1983).
- Lalmani, Kumar, R., Singh, R., Singh, B., Characteristics of the observed low latitude very low frequency emission periods and whistler-mode group delay at Jammu, Ind. *J. Radio and space phys.*, 30, 214-216 (2001).
- Lichtenberger, J., Tarcsai, G., Pasztor, S., Ferencze, Cs., Hamar, D., Molchanov, O.A., Golyavin, A.M., Whistler doublets and hyperfine structures recorded digitally by the signal analyzer and sampler on the active satellite, *J.Geophys. Res.*, 96, 21149 (1991).
- Liemohn, H.B. and Scarf, F.L., Exospheric electron temperatures from nose whistler attenuation, *J.Geophys. Res.*, 67, 1785-1789 (1962).
- Liemohn, H.B. and Scarf, F.L., Exospheric electron temperatures from nose whistler attenuation, *J.Geophys. Res.*, 67, 1785-1789 (1962a).
- Liemohn, H.B. and Scarf, F.L., Whistler attenuation by electron with an  $E^{-2.5}$  distribution, *J.Geophys. Res.*, 67, 4163-4167 (1962b).
- Liemohn, H.B. and Scarf, F.L., "Whistler determination of electron energy and density distribution in the magnetosphere, *J.Geophys. Res.*, 69, 883-904, 1964.
- Mc Chesney, J. and Hughes, A.R.D., Temperature in the plasmasphere determined from VLF observations, *J. Atmos. Terr. Phys.*, 45, 33-39 (1983).
- Park, C.G., Method of determining electron concentration in the magnetosphere from nose whistlers, Tech. Rep. 3454-I, Radiosci. Lab. *Stanford Electron Lab.* Stanford University, Stanford, California (1972).
- Park, C.G., Whistler observations of the interchange of ionization between the ionosphere and the protonosphere, *J. Geophys. Res.*, 75, 4249-4260 (1970).

- Rao, M. and Lalmani, An evaluation of duct lifetimes from low latitude ground observations of whistlers, *Planet space sci.* 23, 923-927 (1975)
- Rycroft, M.J. and Mathur, A., The determination of the minimum group delay of a non nose whistler, *J. Atmos. Terr. Phys.* 35, 2177-2182 (1973).
- Sazhin, S.S., Bogner, P., Smith, A.J. and Tarcsai, Gy., Magnetospheric electron temperature inferred from whistler dispersion measurements, *Ann. Geophys.* 11, 619- 623 (1993).
- Sazhin, S.S., Smith, A.J. and Sazhin, E.M., Can magnetospheric electron temperature be inferred from whistler dispersion measurements, *Ann. Geophys.* 8, 273-285 (1990).
- Sazhin, S.S., Hayakawa, M. and Bullough, K., Whistler diagnostic of magnetospheric parameters: a review, *Ann. Geophys.* 10, 193-308 (1992).
- Scarf, F.L., Landau damping and the attenuation of whistlers, *Phys. Fluids*, 5, 6-13 (1962).
- Seely, N.T., Whistler propagation in a distorted quiet time model magnetosphere, Tech. Rep. 3421-I, *radio Science Lab., Stanford Electronics Lab., Stanford University, California* (1977).
- Serbu, G.P. and Maier, E.J.R., Low energy electrons measured on IMP2, *J. Geophys. Res.* 71, 3755-3766 (1966).
- Singh, R.P., Rajesh Singh, Lalmani, Hamar, D. and Lichenberger, J., Application of matched filtering to short whistlers recorded at low latitudes, *J. Atmos. solar Terr. Phys.* 66, 407-413 (2004).
- Singh, R.P., Patel, R.P., Singh, A.K., Hamar, D. and Lichenberger, J., Matched filtering parameter estimation method and analysis of whistlers recorded at Varanasi, *Pramans J. Phys. (Indian Acad. Of Sciences)* 55, 685-691 (2000).
- Singh, R.P., Singh, D.K., Singh, A.K., Hamar, D. and Lichenberger, J., Application of matched filtering and parameter estimation technique to low latitude whistlers, *J. Atmos. solar Terr. Phys.* 61, 1081-1093 (1999).
- Singh, R.P., Singh, K., Ashok K. Singh, Hamar, D. and Lichenberger, J., Matched filtering analysis of diffused whistlers and its propagation characteristics at low latitudes, *J. Atmos. solar Terr. Phys.* 68, 710-714 (2006).
- Singh, R.P., Whistler studies at low latitudes: a review, *Ind. J. Radio space phys.* 22, 139-155 (1993).
- Singh, B. and Hayakawa, M., Propagation modes of low and very low latitude whistlers, *J. Atmos. solar Terr. phys.* 63, 1133-1147 (2001).
- Singh, R.P., Singh, A.K., Singh, D.K., Plasmaspheric parameters as determined from whistler spectrograms: a review. *J. Atmos. Terr. Phys.* 60, 494-508 (1998).
- Smith, R.L. and D.L. Carpenter, Extension of nose whistler analysis, *J. Geophys. Res.* 66, 2582-2586 (1961).
- Somayajulu, V.V., Tantry, B.A.P, Whistlers at low latitudes, *Indian J. Radio space Phys.* 1, 102-118 (1972).
- Tarcsai, G., Routine whistler analysis by means of accurate curve fitting, *J. Atmos. Terr. Phys.* 37, 1447-1457 (1975).